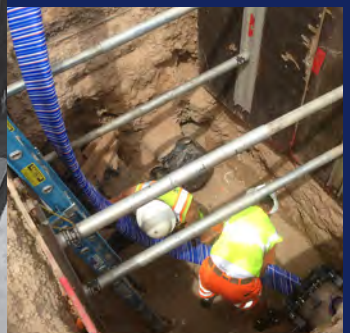




**CONSTRUCTION  
PRODUCT  
MARKETING**

*You Have*  
**Infrastructure  
Needs.**

*We Have*  
**Infrastructure  
Solutions.**



## OVERVIEW

Construction Product Marketing, LLC, offers a unique combination of Product Knowledge, Engineering Expertise, and Industry Experience giving them the ability to offer solutions during the design, construction, operation, and maintenance of water and wastewater infrastructure. Their understanding of Products, Services, Engineering, and Equipment will help develop creative solutions for clients and customers. Partners Chris MacDonald and Mike Ambroziak have over 35 years combined experience specializing in both distribution and collection mechanical product sales, engineering, assessment and rehabilitation systems.

**Chris MacDonald** graduated from Missouri State University with a Bachelor of Science in Marketing and started his career in sales, providing specification and design support for consultants and clients throughout the Midwest and Southwest on water and wastewater projects. His specialty is valves and mechanical systems and has been involved in material management on large scale water and wastewater treatment plans, lift stations, pump stations, well sites and pipelines. In 2010 he founded Construction Product Marketing, Inc developing the Comprehensive Pipeline Management and expanding his knowledge and experience to asset management and compliance software and systems, pipeline and valve condition assessment program development and delivery, leak detection and locating services, and pipeline rehabilitation systems.

**Mike Ambroziak** graduated from Arizona State University with a Bachelor of Science in Civil Engineering degree and subsequently earned his Professional Engineering license in the state of Arizona. After graduation, Mike joined a consulting company where provided design and construction management on water and wastewater projects for both private and municipal clients in Arizona. His specialized experience on large and small pipeline projects includes developing and implementing both distribution and transmission water main condition assessment and rehabilitation projects.

Mike and Chris teamed up in 2013 as a small business committed to quality service and responsiveness to their clients. Since then, their team has grown but they continue that tradition today, offering a wide range of products and services for your water and wastewater infrastructure needs. Their team is willing to mobilize on short notice, work in confined spaces and rights-of-way and coordinate and execute meetings; their ability to respond quickly to customer needs sets them apart from other companies – their phones are never off, and they are available 24/7.

**PRODUCTS**

	<p><b>VSI Waterworks</b>          Gate, butterfly, plug, check valves  <a href="http://www.vsiwaterworks.com">www.vsiwaterworks.com</a></p>
	<p><b>H-TEC</b>          Air release, vacuum, combination valves  <a href="http://www.h-tec.us">www.h-tec.us</a></p>
	<p><b>OCV</b>          Hydraulically-operated, diaphragm-actuate, and automatic control valves  <a href="http://www.controlvalves.com">www.controlvalves.com</a></p>
	<p><b>Reliant Water Technologies</b>          Wet well wizard (fog and odor removal)  <a href="http://reliantwater.us.com">http://reliantwater.us.com</a></p>
	<p><b>Aqualitec</b>          Screening and dewatering equipment, and sludge treatment  <a href="http://www.aqualitec.com">www.aqualitec.com</a></p>
	<p><b>APS</b>          Mechanical seals, casing spacers, NSF Approved gaskets, insulating kits, rado lid bolt and nut protection systems, wall sleeves  <a href="http://www.apsonline.com">www.apsonline.com</a></p>
	<p><b>A3</b>          Water and Wastewater Membranes  <a href="http://www.a3-usa.com">www.a3-usa.com</a></p>
	<p><b>InfoSense, Inc.</b>          Accoustic sewer inspection  <a href="https://infosense.com">https://infosense.com</a></p>

## PRODUCTS *(continued)*

	<p><b>Electro Scan, Inc.</b> Next generation smart pipeline condition assessment <a href="https://www.electroscan.com">https://www.electroscan.com</a></p>
	<p><b>Rehau</b> 3/4-inch to 2-inch cross-linked polyethylene service line tubing <a href="http://www.rehau.com/us-en">www.rehau.com/us-en</a></p>
	<p><b>WACO Products</b> Gates and stop logs <a href="http://www.wacoproducts.com">www.wacoproducts.com</a></p>
	<p><b>Predl Hybrid PVC Manhole</b> PVC pipe meets lined precast concrete; corrosion-resistant thermoplastic manhole lining <a href="http://www.pvcmanhole.com">www.pvcmanhole.com</a></p>
	<p><b>HydraTech</b> 36-inch and larger internal joints seals for pressure or gravity pipe <a href="http://www.hydratechllc.com">www.hydratechllc.com</a></p>
	<p><b>Primus Line</b> 6-inch to 20-inch polyethylene lined and coated Kevlar pressure pipe rehabilitation <a href="http://www.primusline.com">www.primusline.com</a></p>
	<p><b>Gutermann</b> Waterline leak detection sensors and correlators <a href="http://en.gutermann-water.com">en.gutermann-water.com</a></p>

## SERVICES

### **Potable Water CCTV**

Dedicated closed circuit television equipment for potable water infrastructure 6 inch diameter and larger.

### **Leak detection**

Leak detection surveys using Gutermann ground sounding, live correlating, and correlating logger equipment.

### **Air Valve Assessment and Maintenance**

Water and wastewater air valve assessment, repair and maintenance with the ability to perform one day of work or develop custom built maintenance and asset management programs.

### **Iso Valve Install, Start-up and Maintenance**

Butterfly, gate, plug, check, and valve installations, start-up and maintenance with ability to perform one day of work or develop custom built maintenance and asset management programs.

### **Valve and Hydrant Operation and Maintenance**

Valve turning, testing, and hydrant operating and maintenance.

### **Remote Pipeline Operation Monitoring**

Pipeline and pump station monitoring of transient pressure, flows, pump run time, vibration, water quality, and temperature monitoring that can be utilized for identifying trends and future maintenance of the facility.

### **Ultrasonic Thickness Measurement**

Metallic thickness testing of pipelines, tanks, and any other water/wastewater infrastructure.

### **Pipeline Inspection and Assessment**

Technologies and equipment available for internal and external, in service and out of service pipeline inspection and assessment to understand the condition and remaining useful life of water and wastewater pipelines.

## REHABILITATION

### Primus

Trenchless technology designed by Raedlinger for the rehabilitation of medium and high-pressure pipelines. The flexible sliplining technology is based on semi-structural, flexible, ultra-high strength hose consisting of three (3) layers: Outer (abrasion-resistant PE sheath), Kevlar Fabric and Inner (media-specific).

Visit our website, [www.constructionproductmarketing.com](http://www.constructionproductmarketing.com) for CPM installations of Primus Line.

### CIPP

Specialty cured in place pipe lining and repairs. While there are many companies throughout the southwest that perform main line sewer CIPP installation services, CPM focuses on the unusual and hard to access repairs required. Where there is limited access from just one direction, CPM can work with our valued installation contractor partners to make these repairs where other companies typically will pass on these opportunities. In addition to longer full pipe repairs, CPM also can perform patch repairs from just a few feet to several hundred feet and navigate bends in the gravity systems as well when dealing with a smaller lateral connection vs. a main line straight sewer shot. Call for more information or to share your specific project details for generating a turn key proposal.

### Spray in Place

Sprayed in place pipe rehab has become more and more accessible as the cost of equipment has fallen for making the installations. Traditionally the equipment needed to perform a fully structural sprayed in place pipe rehab on a water or sewer pressurized pipe system has been out of reach due to the cost. Now that lower cost equipment is available CPM can provide structural repairs with internal pressure ratings exceeding 100 psi. These type of pressure pipe repairs are available on pipes of all sizes with challenging access points. The typical system includes a polyurea lining system applied either robotically with spin casters or hand applied on larger diameter where manned entry and access is available. Please call us with your specific project needs so that we may develop a turn key solution for your specific problem.

### Internal Joint Seals

Available from 6-inch through 120-inch for making repairs to both joints or defects internally without excavation. CPM can provide the necessary products, installation assistance or full turn key installation depending on the client's needs. Installations through 30-inch can be performed utilizing robotic systems in both gravity sewer lines or pressurized water and sewer force mains.

### PREDL

Wastewater resistant thermoplastic liners to protect concrete manhole structures from corrosion due to H<sub>2</sub>S gas and abrasion. Cost effective full-service solution provider of proven custom and standard products. Systems for both New construction and rehabilitation requirements to provide 100-year design life for structures and manholes. Innovative Hybrid PVC manhole systems for new construction utilizing DR51 C900 PVC pipe risers up to 60-inch in diameter.

Visit [www.predlsystems.com](http://www.predlsystems.com) and [www.pvcmanhole.com](http://www.pvcmanhole.com)



## CONSTRUCTION PRODUCT MARKETING

3815 East Grove, Unit 4  
Phoenix, AZ 85040

[www.constructionproductmarketing.com](http://www.constructionproductmarketing.com)

### **CHRIS MACDONALD**

*Managing Partner*  
480.206.2309

[chris@constructionproductmarketing.com](mailto:chris@constructionproductmarketing.com)

### **MIKE AMBROZIAK, P.E.**

*Managing Partner*  
602.228.5040

[mike@constructionproductmarketing.com](mailto:mike@constructionproductmarketing.com)

### **JESSE BLACK**

*Outside Sales*  
928.301.8264

[jesse@constructionproductmarketing.com](mailto:jesse@constructionproductmarketing.com)

### **TRAVIS ALLEN**

*Texas Sales Manager*  
210.978.2231

[travis@constructionproductmarketing.com](mailto:travis@constructionproductmarketing.com)

### **JAN HAWTHORNE**

*Inside Sales*  
602.419.6713

[jan@constructionproductmarketing.com](mailto:jan@constructionproductmarketing.com)

### **MEGAN AMBROZIAK, P.E.**

*Business Operations Manager*  
602.499.3584

[megan@constructionproductmarketing.com](mailto:megan@constructionproductmarketing.com)

